

**citizenre**

**Our Meeting Will Start Soon!!!**

---

---

---

---

---

---

---

---

**citizenre**  
REnU

Join the Solution. 35,434 already have.

- No system purchase
- No installation cost
- No maintenance fees
- No permit hassles
- No performance worries
- No rate increases

**rethink solar**

Chris Preddy, LEED AP  
Green Building, Sustainability & Energy

PLAY

Service: Smart Decisions | System: Forward-Thinking | Education: Expert Advice | Reserve Your System

---

---

---

---

---

---

---

---

**citizenre**

Citizenre =  
Citizen + Renewable Energy

Powur = Power given back to U  
the people

**POWUR**  
of citizenre

---

---

---

---

---

---

---

---

## For Starters

- I am not employed by either citizenre nor powur corporation. I am an independent ecopreneur
- This company is ground floor. There are installation happening in CA now
- There have been quite a few setbacks and delays
- There are many critics who say it will fail. And it might But I believe it is the wave of the future!!!

---

---

---

---

---

---

---

---

## Why Go Solar?

- Help improve the security of our country by minimizing our dependence on foreign fuels
- More environmentally friendly. On average each home switched to Solar reduces pollution = to planting 400 trees or removing 24 cars
- Lessen Global Warming and insure a greener, more secure world for our children
- Alternatives to Solar Energy such as Nuclear is toxic and a potential danger

---

---

---

---

---

---

---

---

28 March 1979



---

---

---

---

---

---


---

---

**Scientist discover Jet fuel (perchlorate) in breast milk, which can cause cognitive and motor defects in newborns.**  
Health Day New Dec 7, 2006

**Environmental Toxins May Limit Fertility In Offspring**  
 PAH (Polycyclic Aromatic Hydrocarbons) produced in fireplaces, wood stoves, unvented gas burning appliances, kerosene space heaters and coal furnaces can settle in the fatty tissues and ovaries causing limited fertility in offspring.  
Mount Sinai Hospital's Samuel Lunenfeld Research Institute

**Fossil Fuels and even Candle Wicks contain lead.**  
 Lead found even in very low levels of exposure can result in reduced IQ, learning disabilities, attention deficit disorders, behavioral problems, stunted growth, impaired hearing and kidney damage.  
<http://www.nrc.org/library/facts/lead.htm>




---

---

---

---

---

---

---

---

### Some Constants

- No system purchase
- No installation cost
- No maintenance fees
- No permit hassles
- No performance worries
- No rate increases.... You are lock in at current KWh prices for up to 10 years (right now at 2005 rates)

---

---

---

---

---

---

---

---

### Some Changes

- No longer a \$500+ deposit for the panels when you get them installed
- Just first and last months estimated bill
- All contracts will be for 10 years, those who are grandfathered in and had 25 yr contracts will be given the option to re-enlist for a second 10 years at the same price per kilowatt

---

---

---

---

---

---

---

---

## How Does the Program Work?

- You go to a sales associate... We have 2 sales associates whose sites you can sign up on:
- 1. Nicole and Chad Keller  
<http://www.JoinTheSolution.com/NLRCK>
- 2. Noe Idrogo  
<http://www.JoinTheSolution.com/NoeIDROGO>
- Sign a FRA (Forward Rental Agreement), send it back and ...regrettably ... wait
- Someone will come assess your eligibility and tailor make a system for your home
- You agree to or reject the proposed system
- You give a security deposit of your average first and last months rent
- Citizenre monitors the system and takes care of any needed repairs

---

---

---

---

---

---

---

---

*Vertical integration A way to reduce costs by controlling all facets of production, from the solar grade silicon to the final installation.*



### 500 MWp Multi-Crystalline Plant: MG-Si to AC-PV Pod

- |                       |                               |
|-----------------------|-------------------------------|
| • Chlorine Free SG-Si | Anticipate Update - New       |
| • Variable Wafer Size | 2009 – 9000 installed         |
| • 100µ Thickness      | 2010 – 30,000 installed       |
| • Inline Groove       | 2011 – 100,000 installed      |
| • Buried-Grid         |                               |
| • Integrated Inverter | 2525 – 25% USA of electricity |

---

---

---

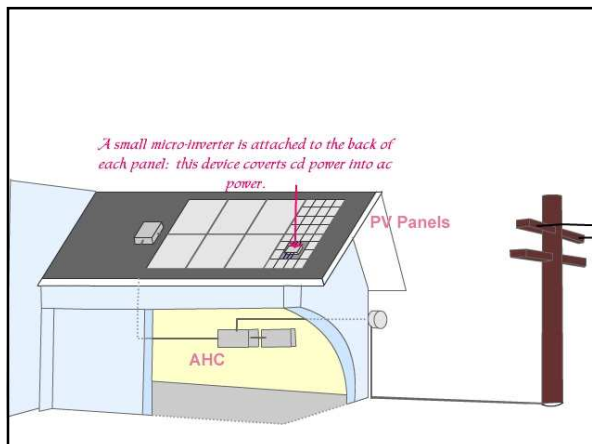
---

---

---

---

---




---

---

---

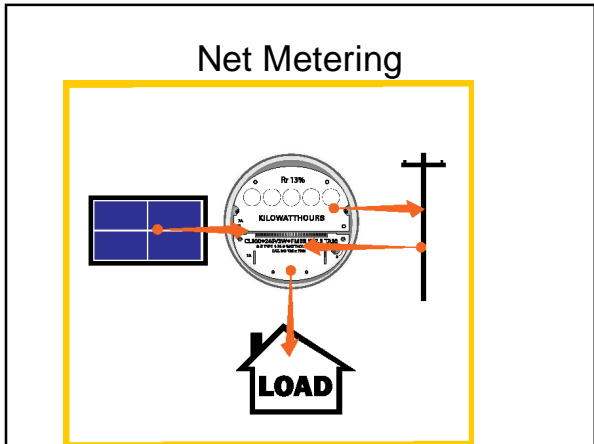
---

---

---

---

---




---

---

---

---

---

---

---

---

- ### How Can Citizenre Make Such an Unprecedented Offer?
- Rent
  - No storage unit... electricity goes right into the grid
  - Only have to make one type... Standardized
  - Sell green hours to offset carbon hours to other companies

---

---

---

---

---

---

---

---

- ### Update from Rob
- Currently we are still working on several promising funding options, but as we have often repeated, it is not done until it is in the bank
  - The great news is that we are now installing panels on customer's rooftops and our destiny is in our own hands

---

---

---

---

---

---

---

---

## How Can I Get the Most Out of Citizenre program?

- Tell others about Citizenre and take advantage of the 5% customer referral up to 100% of your electric Bill
- 10% IRA (Installation and Retention Advance)
- 40% At instillation
- 50% One year anniversary if they are in good standing
- 5% of person's electricity
- Residual income of 15% FRA and 1% for global bonus pool?
- Trips and monthly car bonuses

---

---

---

---

---

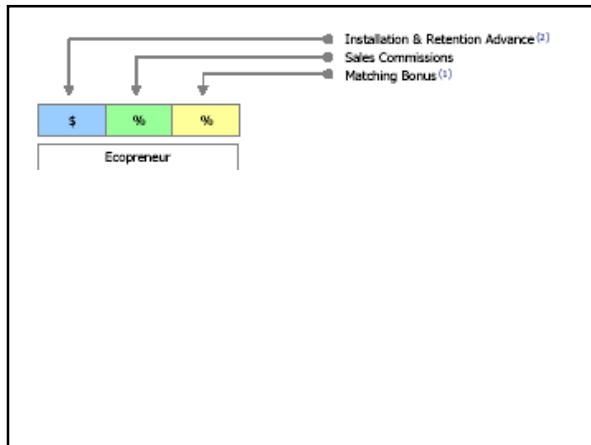
---

---

---

---

---




---

---

---

---

---

---

---

---

---

---

## Compensation Plan

	Sales Associate	Sales Manager	Senior Sales Manager	Executive Sales Manager	Sales Director	Senior Sales Director	Executive Sales Director
	1	5	10	15	25	25	25
	1	10	100	250	500	1000	5000
	Y	Y	N	N	Y	N	N
	\$300 3%	\$300 5%	\$300 5%	\$300 5%	\$300 5%	\$300 5%	\$300 5%
1st Generation	50%	\$80 1% 50%	\$80 1% 50%	\$80 1% 50%	\$80 1% 50%	\$80 1% 50%	\$80 1% 50%
2nd Generation		\$20 1% 25%	\$40 1% 25%	\$40 1% 25%	\$40 1% 25%	\$40 1% 25%	\$40 1% 25%
3rd Generation				\$40 1%			
4th Gen.(1)					\$20 1%	\$20 1%	\$20 1%
5th Gen.(1)						\$20 1%	\$20 1%
Training			Training KR		Specialized	Advanced	Leadership
1% Bonus Pool					1 Share in Pool	2 Shares in Pool	3 Shares in Pool
Hybrid Car Bonus						\$500/mo	\$1,000/mo

Generation 5 personal and 10 in team --- Sponsor and Placement  
 --- Must have 5 teams -- IRA 1/2 at signing and 1/2 1 year anniversary

---

---

---

---

---

---

---

---

---

---

Business Presentation



### Ecopreneur Income Possibilities

- \$300 Advance on all personal contracts
- \$20 to \$80 paid for each installation in your Team
- 5% residual income on all personal sales
- 1% residual income paid on 5 generations (Team Bonus)
- 50% Matching Bonus on the Team Commission of anyone you personally sponsor
- 25% Matching Bonus on your second generation
- 25% Matching Bonus on your third generation

There is also a monthly Car Bonus of between \$500 to \$1000 for your eco-friendly hybrid vehicle when you help enough people upgrade to solar.

Plus special All Expense Paid Vacations and trainings.

**Imagine earning a residual income on thousands of homes while helping others join the solution and become Ecopreneurs.**

**It is free to join.**

12

---

---

---

---

---

---

---

---

---

---


---

---

*Being a "visionary" is being more than just a dreamer. A dreamer sees things as they wish they could be..... a "visionary" sees things as they will become.*

*A "visionary" is a person of action. Good things don't just happen. They are brought to pass through carefully planned, organized and executed activities.*

E.P.O.




---

---

---

---

---

---

---

---



---

---

---

---

## Are you a "Visionary"

- No system purchase
- No maintenance cost
- No maintenance fees
- No permit hassles
- No performance worries
- No rate increases

Service: Smart Decisions    System: Smart Financing    Education: Smart Advice    Reserve Your System

Nicole and Chad Keller <http://www.JoinTheSolution.com/NLRCK>  
 Noe Idrogo <http://www.JoinTheSolution.com/NoelDROGO>  
[MarysHerbs@aol.com](mailto:MarysHerbs@aol.com)  
 814-674-8835

---

---

---

---

---

---

---

---

---

---

---

---

