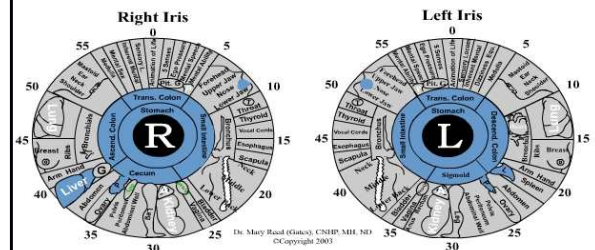


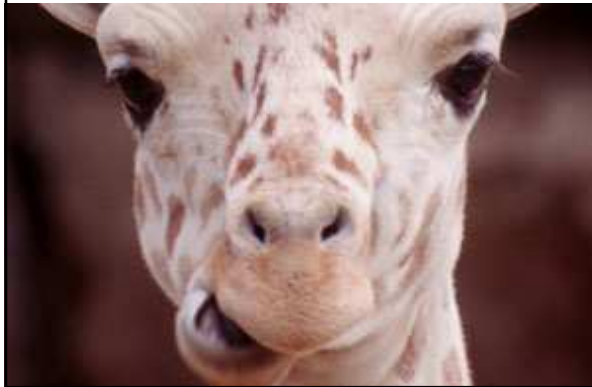
## Iridology is Said to be 95% Accurate

- Operation cauterized or nerves disrupted
- Injury to the eye
- Mistaken diagnosis
- Type of Tissue involved
  - Esophagus
  - Stomach
  - Intestine
  - Bladder
  - Uterus

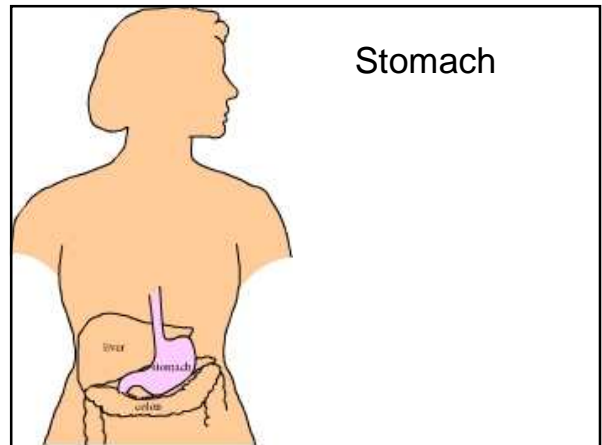
## Digestion System



Chew!!!



Stomach

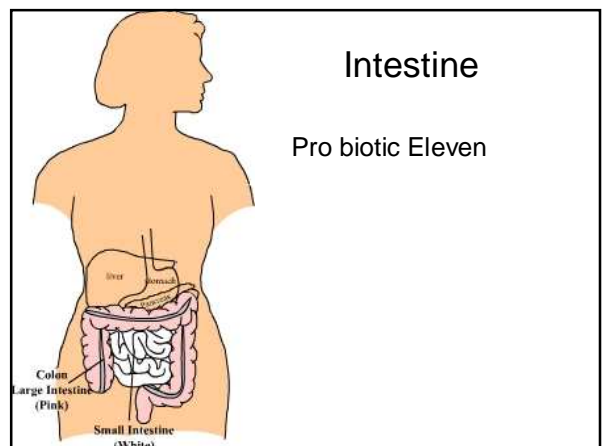


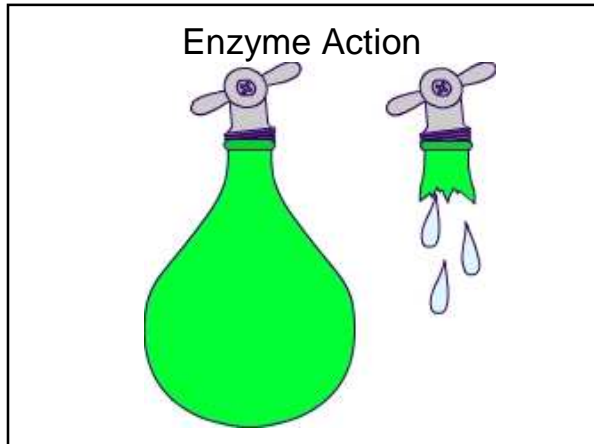
HCL

- The acid provides an optimum pH for the reaction of the enzyme [pepsin](#).
- PDA
- Food Enzymes

Intestine

Pro biotic Eleven





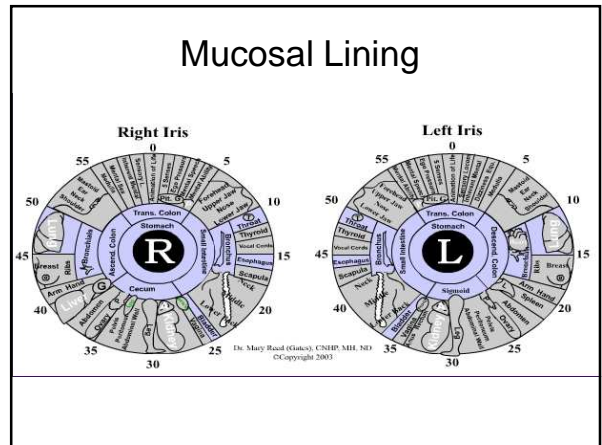
### Liver

- Food Enzymes
- Proactzyme
- Liver Cleanse
- Liver Support Chinese
- Vitamin E and A
- Full Spectrum Light

### Pancreas

Food Enzymes

BRN-AV  
ProPancreas  
Chromium  
Stevia



This is a drawing of the stomach.

At the top and bottom of the stomach are sphincter muscles to pinch close the stomach.

**Diverticulum**

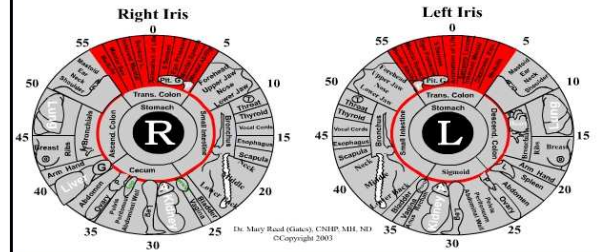
**Mucosal Lining**

You can not reverse a diverticulum, however, you can nourish the body so it will hopefully build the mucosal lining which will make it less likely that food would get hung up in the diverticulum.

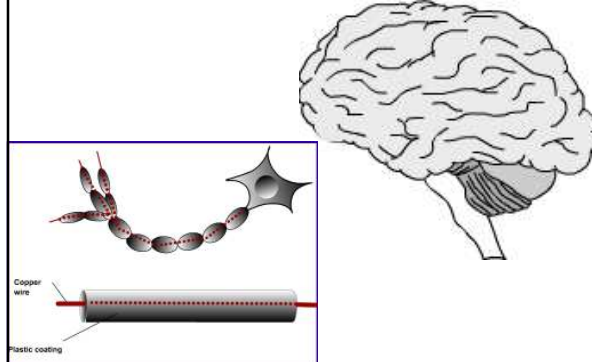
## Mucus Lining

- Slippery Elm
- Aloe Vera

## Brain/Nervous System



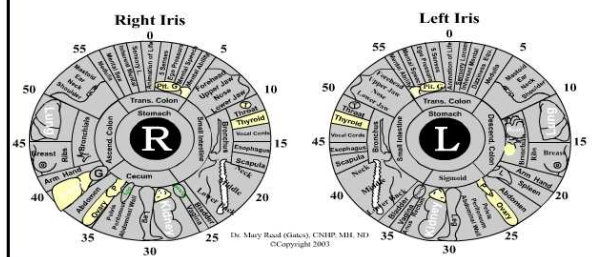
## Brain & Nervous System



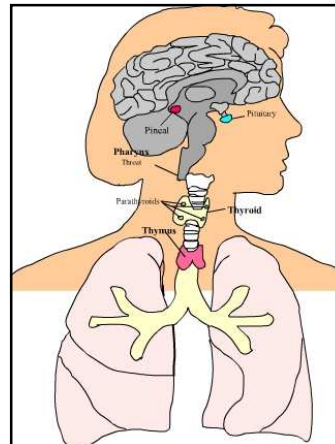
## Nerves and Brain

- Evening Primrose
- Flaxseed Oil
- Black Currant Oil
- Super Omega 3 Oil

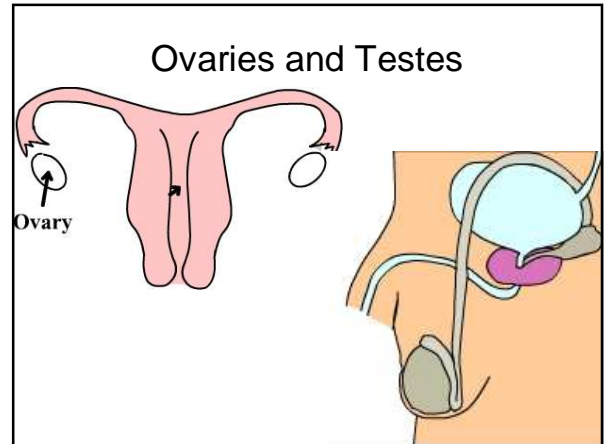
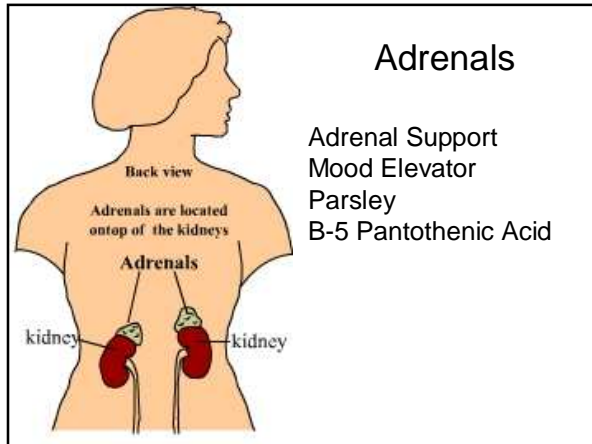
## Glandular



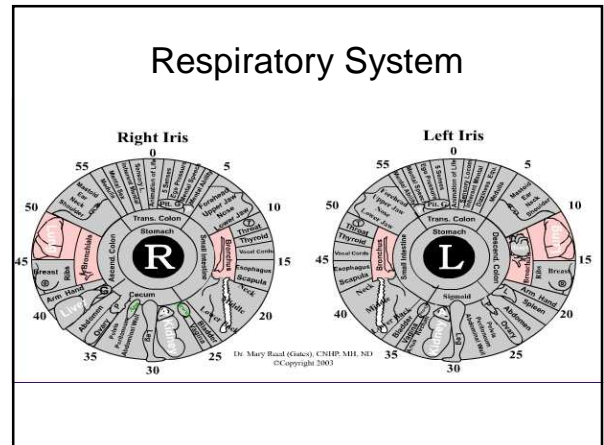
## Upper Glands



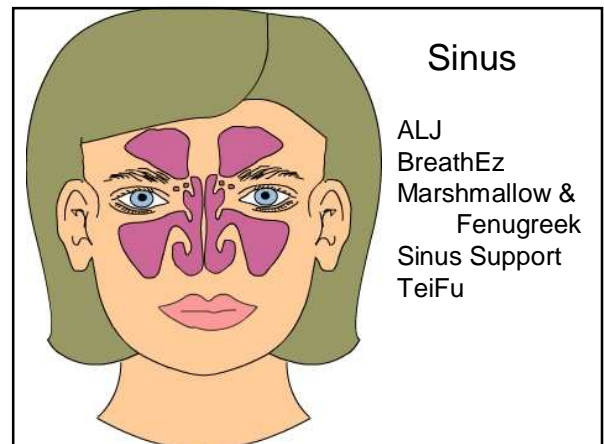
- Mastergland Formula
- Alfalfa
- Spirulina
- UV light
- Kelp
- Thyroid Activator
- THIM-J

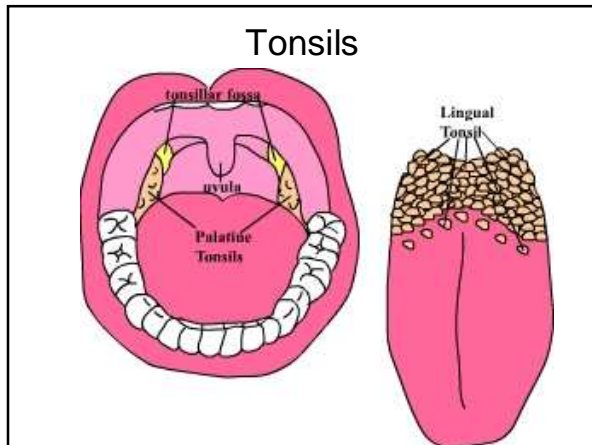
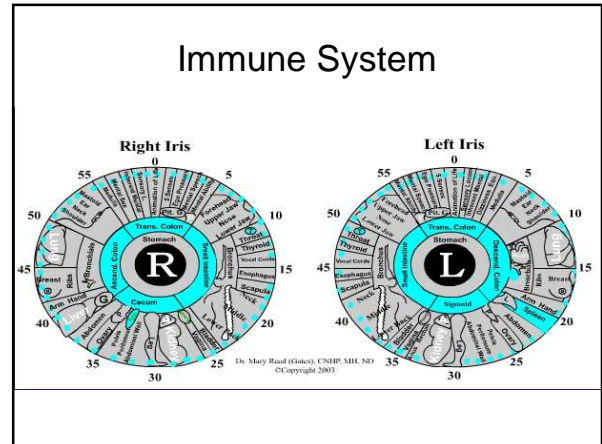
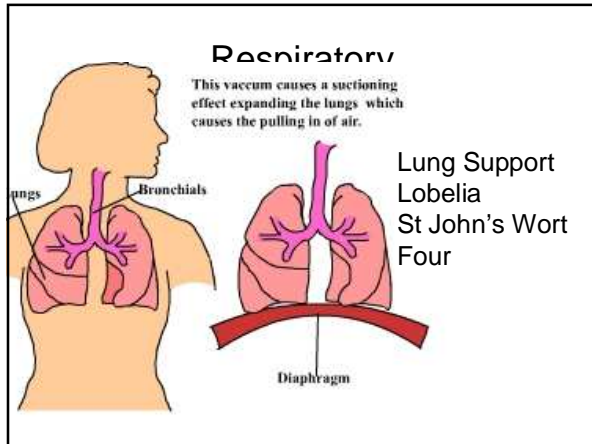


- ### Ovaries/Testes
- Female comfort
  - FCS II
  - Progam 500
  - Maca
  
  - Maca
  - Zinc
  - L-Glutamine
  - Saw Palmetto



- ### pH imbalance
- White
  - Cattarh
  - Kidney





- ### All Lymph Problems
- Lymph Gland Cleanse
  - Lymph Gland Cleanse for Hypoglycemics
  - Echinacea
  - All Cell Detox
  - Essiac Tea
  - Trampoline
  - Lymphatic Massage

